

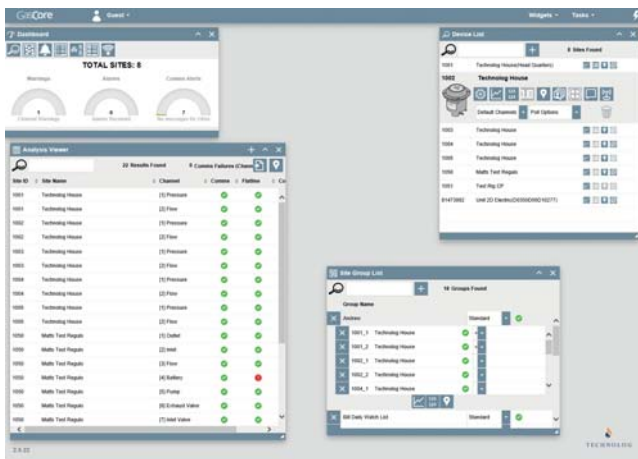
An intuitive, web-based data collection and management solution providing comprehensive tools for site visualisation, analytics and pressure management.

GasCore builds on Technolog's excellence in data logging, remote data collection and pressure management by complementing its cutting edge technology with a highly stable and configurable web based platform.

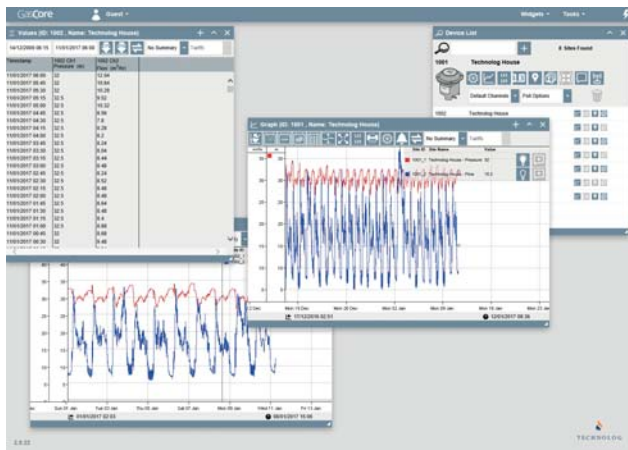
## Key Features

- Compliments existing supervisory control and data acquisition (SCADA) networks
- Data analysis and configuration of sites 'on-the-move'
- Site visibility
- Remote configuration and management of Technolog's Cello based products
- Fully compatible with all modern web browsers
- Suitable for installation on a local server and corporate intranet

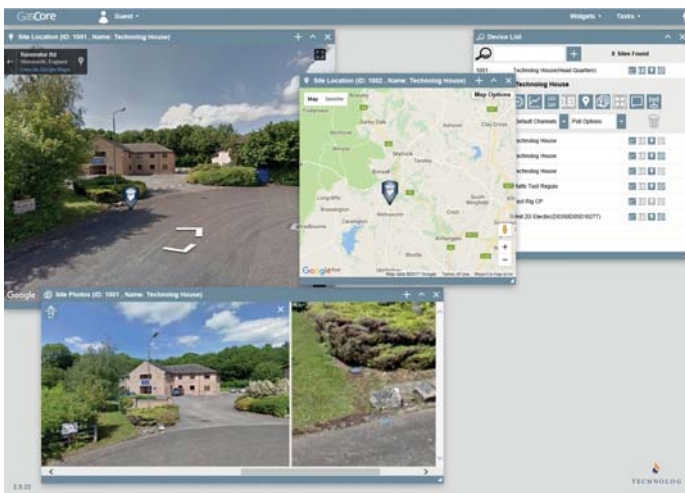




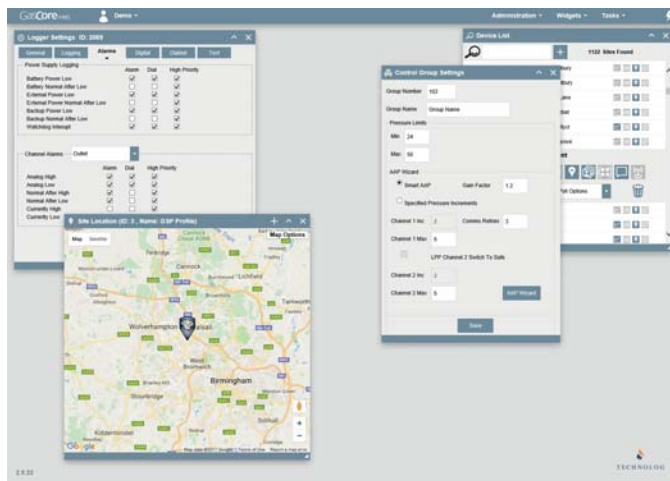
- GasCore provides administration of multiple login accounts.
- Specified users are presented with a 'Dashboard' that provides immediate visualisation of sites, status, communications and performance.
- Analysis viewer provides both tabular and geographical interfaces to display site communication status and data verification.
- User definable pressure control groups.



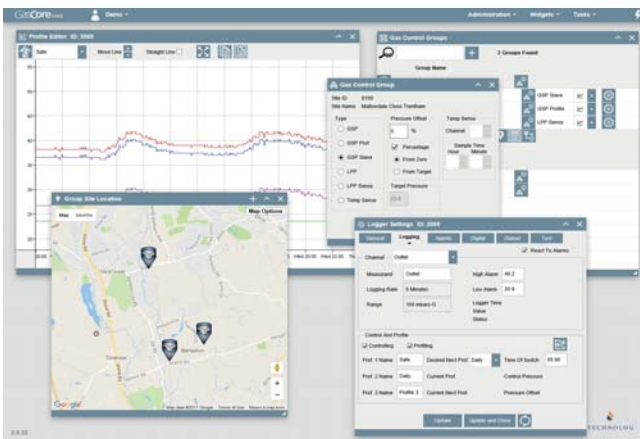
- Easy graphing of sites, with options to totalise data, compare profiles.
- Fluid and intuitive graph navigation.
- Multiple sites or channels can be viewed on a single graph using a simple 'drag and drop' e.g. to compare minimum night flows or the effect of flow against multiple pressure points within a distribution network.
- Automated Meter Reading (AMR) data can be displayed in an easy to read table.



- Google Maps are integrated with GasCore as standard. Site locations can be plotted to allow easy location of Technolog's Cello data loggers and pressure controllers.
- GasCore supports Google 'Street View' to allow visualisation of site locations. Site and installation photos can be uploaded.
- Satellite and terrain map views.
- GasCore runs on a powerful database allowing multiple site parameters to be collected and stored including asset information, site hazards, installation details, site remarks etc.



- GasCore Dashboard provides links to all current alarms and site warnings.
- Site Alarms can automatically be forwarded to one or more mobile devices or email addresses based on criteria as defined by the administrator.
- Recipients of an alarm on a mobile device may request further site information by sending an SMS message to the server.
- Groups can be easily created showing the current status of sites within a specific gas supply zone.



- GasCore allows full remote configuration of Technolog's data loggers and Technolog's advanced pressure controllers.
- Modification of Cello and Autogas settings are based on user log-in permissions, including communication and transmission frequency, alarm profiles, thresholds, logging rate and scale factors.



- Site data may be manually or automatically exported into other formats, including CSV, for further manipulation in spreadsheet packages.
- Fully compliant OPC Server with OPC AE (Alarm and Event) and OPC HDA (Historical Data) protocol components, recorded data and alarms can be sent to other client machines also supporting OPC AE and HDA.
- Facilitates export of meter indices for billing and offline meter read analysis.